



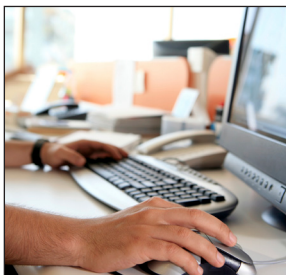
Image**MAKER**

Discovery Assistant

Electronic Discovery Software

ImageMAKER Discovery Assistant is a feature-rich, robust, scalable and easy to use e-discovery processing solution.

Discovery Assistant is designed specifically for litigation support professionals to capture, search, and process Windows-based electronic documents. Users can quickly search through millions of native documents, scanned documents, emails and their attachments to find relevant information. Processed documents can be exported as native files, or as TIFF or PDF images (including hidden Metadata and text) to many of the leading case management review tools. Export formats include Ringtail, Concordance, Summation, Relativity and others.



Discovery Assistant Features:

- Keyword search through terabytes of data to find relevant information.
- Convert terabytes of e-mail, electronic documents, scanned images to TIFF or PDF, while extracting Metadata and Text. Supports de-duplication using MD5Hash.
- Distributed processing to TIFF with support for OCR.
- Keeps track of each document, maintains parent child relationships, full audit trail, reporting tools.
- Identify and group near duplicate documents and email threads.
- Informative tabbed interface, with the ability to drill down into the details.
- Out of the box installation, simple to install, and simple to use software. You will be up and running in 10 minutes.
- Fully functional free demo download.
- Knowledgeable support staff, phone support, custom development services available.
- Unlimited conversions for US\$6,000 with no hidden or per-click charges.

Discovery Assistant

Simple 7-Step Process



Gather Electronic Data

Most data is generated electronically, including email messages and associated attachments, documents, spreadsheets, databases, presentations, and other data. This information is found in a wide variety of places, including desktop PCs, laptops, network servers, backup tapes, email systems, storage media, PDA's and other devices, all of which can be targeted with Discovery Assistant by simply identifying the file(s) to be processed.



Import Files

Add in the files to process. This is easily achieved simply from the 'All Files' Tab by selecting 'Add' and choosing 'Files', 'Folders' or 'List'.



Keyword Search / Filter

Imported files can be keyword searched and filtered based on user supplied criteria. Only those documents and their family members that match the search or filter criteria are then processed. This feature allows user to efficiently cull the contents of the data-set down to a more reasonable size.



Convert Files

Queue files for conversion, and simply hit the 'Convert' command. The user has the choice of processing MetaData only, Metadata + Text, or MetaData + text + TIFF. TIFF'ing conversion speed is rated at 1 page per second / 3,500 pages per hour / 70,000 pages a day.



Review

Using the QC Module, the user has the option to review converted documents, on a page by page basis. Page image data is displayed alongside extracted text. User can optionally review MetaData and the original source document.



Stamp

Discovery Assistant includes a powerful stamp feature that allows the user to place a text string, or a watermark in any of 6 positions on the image page. Users can add dynamic strings that use a combination of metadata to construct the string.



Export

Once the files have been imported, converted, debanked, assigned document ID's, and quality checked, it's time to export. Exported load files can be loaded and processed by Case Management systems before production to the other parties in the lawsuit.

Discovery Assistant

Testimonials

"Discovery Assistant allows us the flexibility to do Electronic Data Discovery (EDD) on a wide variety of data. The tabular methodology that **ImageMAKER** used when developing the product, makes training and project initiation much faster and streamlined."

"Probably the best thing about working with **ImageMAKER** is that when you call and need help working on a project, the people who developed the product are the ones who answer the phone."

Paul Maggio, Chief Operating Officer
Global Legal Discovery, LLC

"I remain of the firm opinion that Discovery Assistant is one of the most cost effective pieces of software in its class that deserves to be well and truly out there."

Brian Colins, CMS Cameron McKenna

"I've been happy with your product. Of course, we've run into many problems, but you guys have always jumped right in and taken care of any problems and shortcomings, and quickly released the fixes to me."

Mark Cardwell, Forentech, LLC

"Without this product, I would have been in big trouble. The technical support team worked over-time to help me get what I needed to get through my lawsuit. The key features for us were the ease of use, maintaining parent child relationships, and the ability to bates stamp, and quick turn-around on any technical questions we had."

Joseph Loomis, Loomis Strategies

ImageMAKER Development Inc.

416 Sixth Street, Suite 102
New Westminster, BC, Canada V3L 3B2

Sales: Toll Free (866) 525-2170 or (604) 525-2170

Support: (604) 525-2108

Fax: (604) 520-0029

Email: sales@discoveryassistant.com

support@discoveryassistant.com

www.discoveryassistant.com

Discovery Assistant

Scales to Handle Terabytes of Data

ImageMAKER Discovery Assistant is an eDiscovery processing tool that can load, deduplicate, search, filter, TIFF, bates stamp, and export terabytes worth of electronically stored information ready for import into multiple eDiscovery review platforms.

Discovery Assistant's advanced distributed processing architecture allows users to scale document processing across multiple computers to meet any litigation challenge.

Distributed Processing Across Multiple Machines

Remote desktop computers can be configured to work together to process electronically stored documents. Distributed processing can be done at the file level, or project level, depending on the granularity of the project (*top right*).

Single point of Control

Grouped computers can be managed from a single location. A simple to use application provides visual feedback on processing status.

Batch Processing Dialog

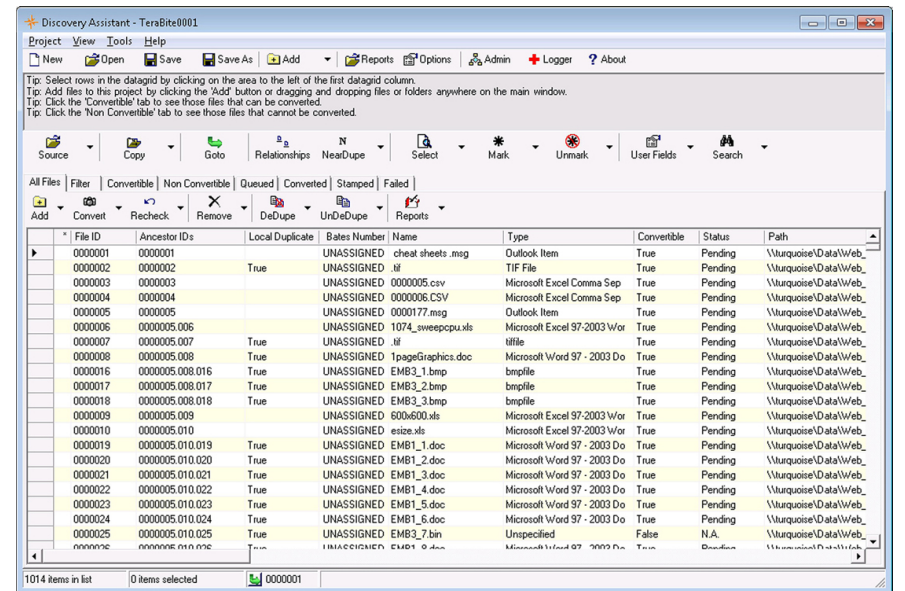
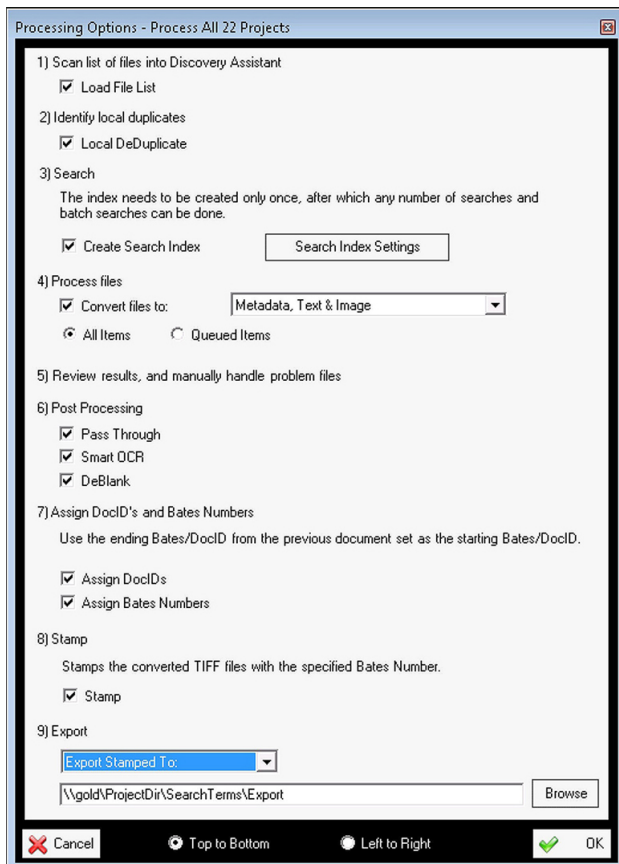
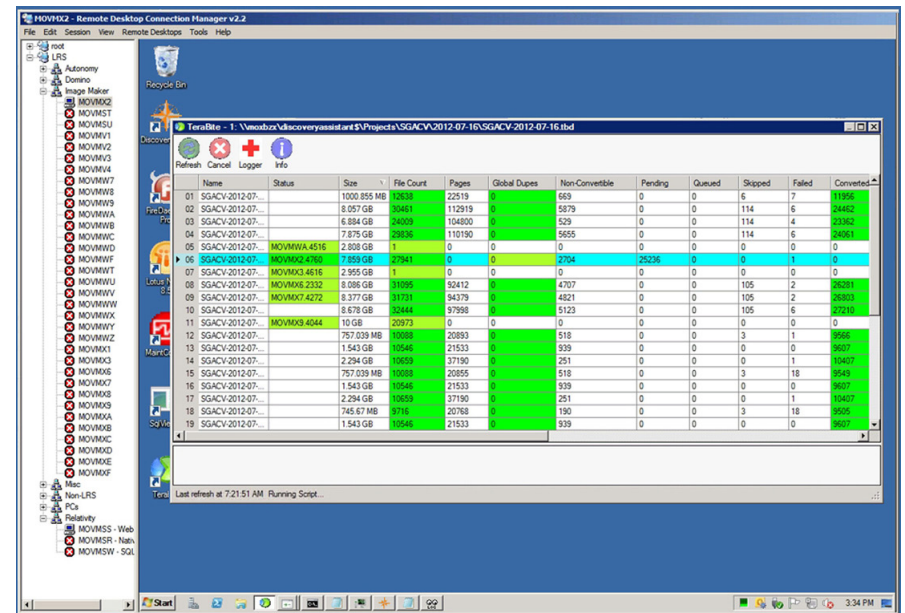
An application dialog provides a simple batch interface to control conversion of documents. Once tasks have been defined, the application carries out its assigned duties without further human intervention.

Detailed Review Capabilities

Users can drill down into individual projects to review document details, check quality control, and ensure that everything is processing smoothly (*lower right*).

Notes:

1. Source documents and Projects can be stored on a network appliance (like NetApp) to enable fast processing across multiple machines without bogging down network connections.
2. Discovery Assistant installs on all Microsoft Windows operating systems, and takes advantage of modern multi-core processor technology. The minimal memory required is four gigabytes.
3. Supported document file formats include Microsoft Outlook PST and MSG, Lotus Notes NSF, Outlook Express EML, Internet email, Microsoft Office Documents (DOC, PPT, XLS), Adobe PDF, HTML, Zip, and hundreds of other common file types.
4. Supported export load file formats include Relativity, Ringtail, Concordance, Summation and CSV.



The easy to use application provides a simple batch interface (*above*) to control processing of documents. Once tasks have been defined, the application carries on its assigned duties without further human intervention.